

**Messenger Series***Rugged industrial communications devices for SCADA systems*

5-Port Industrial Ethernet Switch

Lets multiple Ethernet Devices share a network connection in harsh environments

- Five-port 10/100 Fast Ethernet Switch – share a network connection with no contention
- Unmanaged switch – no configuration needed
- Auto speed, duplex and flow control negotiation – plug and play with various devices
- Auto MDX/MDI-X connection – never requires a crossover cable
- Link Status and Activity LED indicators for easier system troubleshooting
- Low-power and smart power management for solar/battery backed applications
- 10Vdc to 30Vdc DC power, ideal for battery backed systems
- Compact designs saves panel space
- Snap-on DIN Rail Mounting
- Wide operating Temperature Range: -40°C to +70°C
- 3-year factory warranty on parts and labor



Industrial Ethernet Switch

Five-port 10/100 Ethernet Switch – Interconnect up to five fast Ethernet devices with no throughput limiting contention. Need more connectivity? Simply daisy-chain switches as required.

Galvanic Isolation – Transformer isolation on each port eliminates ground loops.

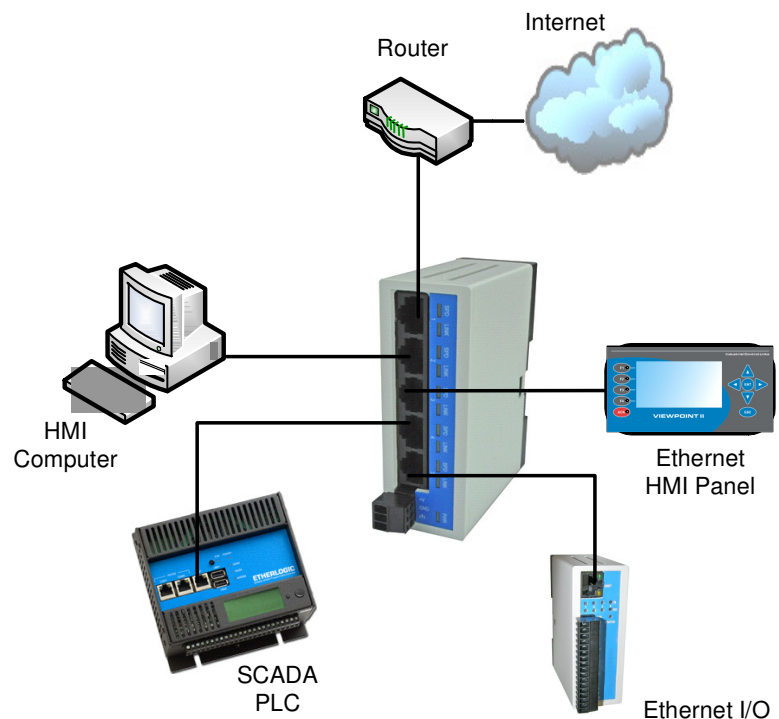
Fast Field Installation - Requires no configuration. Speed, duplex, flow control and transmit/receive connections are automatically detected/negotiated on each port, making installation truly plug-and-play with a mixture of Ethernet devices.

Low-cost twisted pair wiring– Uses low-cost industry standard RJ-45 connectors and twisted-pair cables.

DC Powered – Use the same 12V or 24V DC power supply that powers your other controllers and sensors. Supports battery-backed applications also.

Compact – Very small footprint and DIN rail mounting minimizes required panel space.

Rugged Reliability – 100% tested over an extended temperature range of -40C to 70C, and backed by an industry leading 3-year factory parts and labor warranty.



Ethernet Switch in typical SCADA application

Specifications

Network Communications

Standards	IEEE 802.3, 802.3u
Number of Ports	5
Network Speeds	Fast Ethernet (10/100)
Interface Connections	RJ-45 x 5
Maximum Cable Length	100M (328 ft.)
Port wiring Configuration	Auto-negotiated (Auto MDI/MDI-X)
LED Status Indicators	Connection Speed (10/100) and Activity

Terminal Blocks (power)

Removable, 3.5mm (0.138"), 12 to 22AWG, 15A/contact maximum

Mounting

35mm. DIN rail

Dimensions

1.4"W x 3.7"H x 3.8"D (includes terminal block and elevation off panel on DIN rail)

Environment

- 40°F(- 40°C) to 158°F (70°C), 5%RH to 95% RH, non-condensing

Power

10 to 30Vdc

Warranty

3 years, factory parts and labor

Switch Part Number

94-1105 Ethernet Switch, 5-port, Unmanaged, 10/100 (Auto MDI/MDI-X, DIN Rail, Ext. Temp

Mating Cables

99-10xx RJ-45 to RJ-45 Ethernet Cable, Cat 5e (xx is length in ft. – available lengths: 01, 03, 06, 10, 15)

Represented by: